

[www.Alltraxinc.com](http://www.Alltraxinc.com)



Installation guide for XCT controllers  
on 2008.5-2018 Club Car Precedent  
IQ and Onward models.

# Kit Contents

X2



Nylon Washer 375

X2



Nylon Washer 125

X4



Flat Washer

X4



Nylon Nut 1/4 x 20

X2



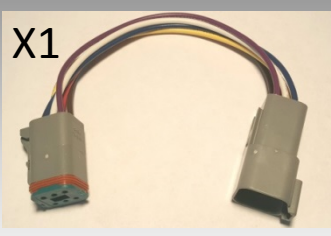
Bolt 1/4 x 20 x 2"

X2



Bolt 1/4 x 20 x 1.75"

X1



OBC Extension



Drill Template

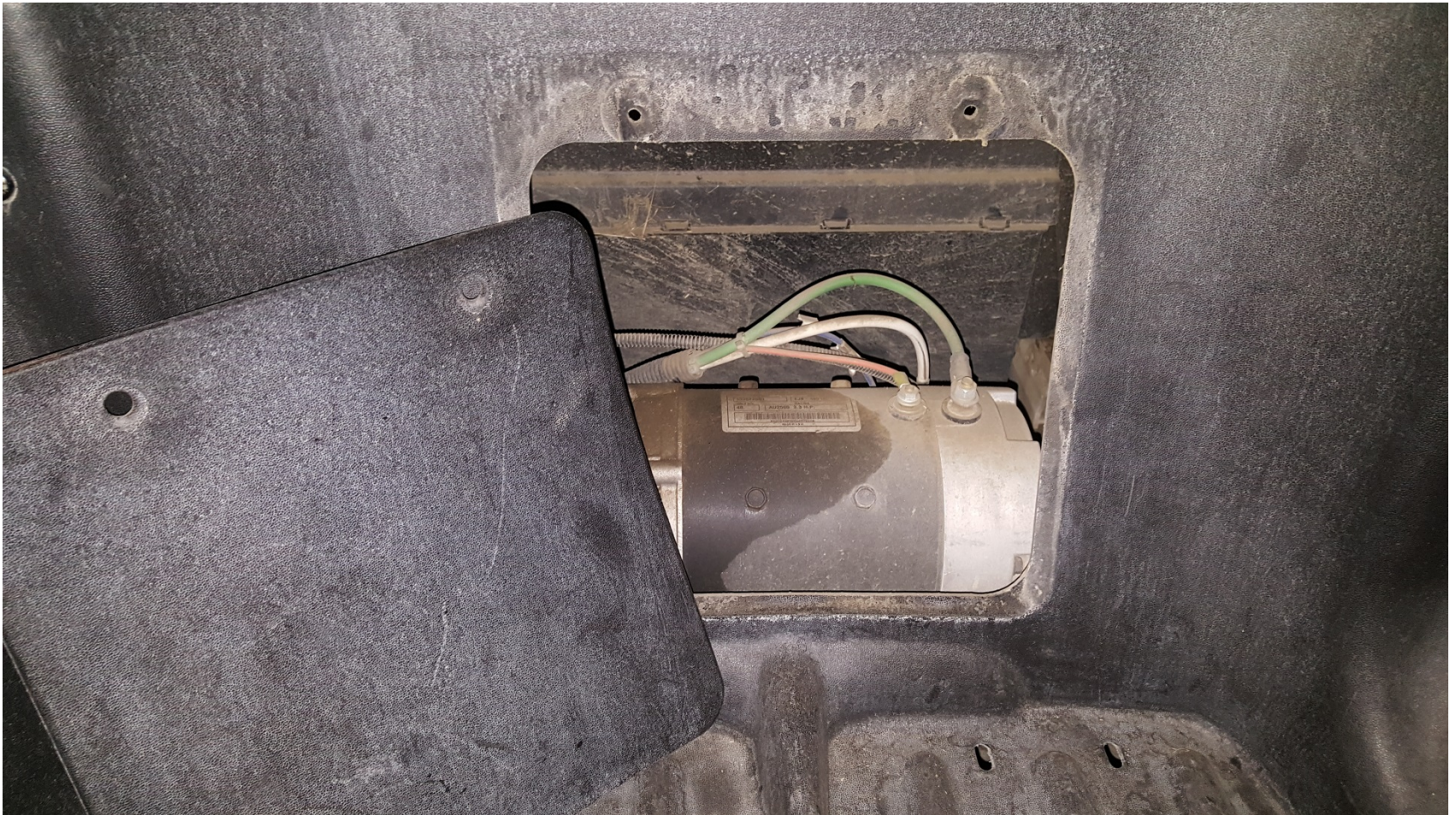


4 AWG 16" 5/16  
Ring Terminal

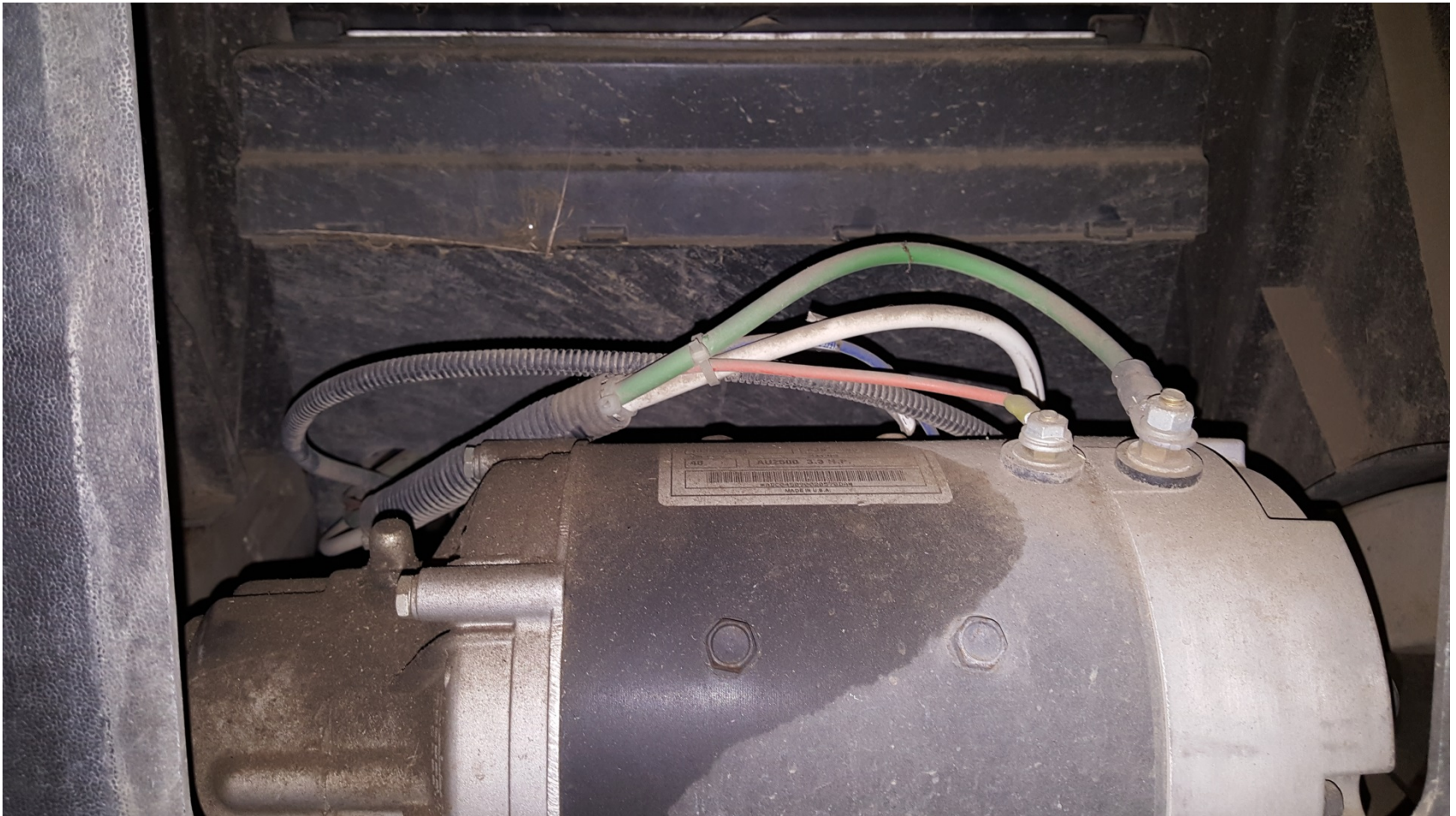
## WARNING:

This installation should be done by a certified golf cart technician or someone trained in the craft.

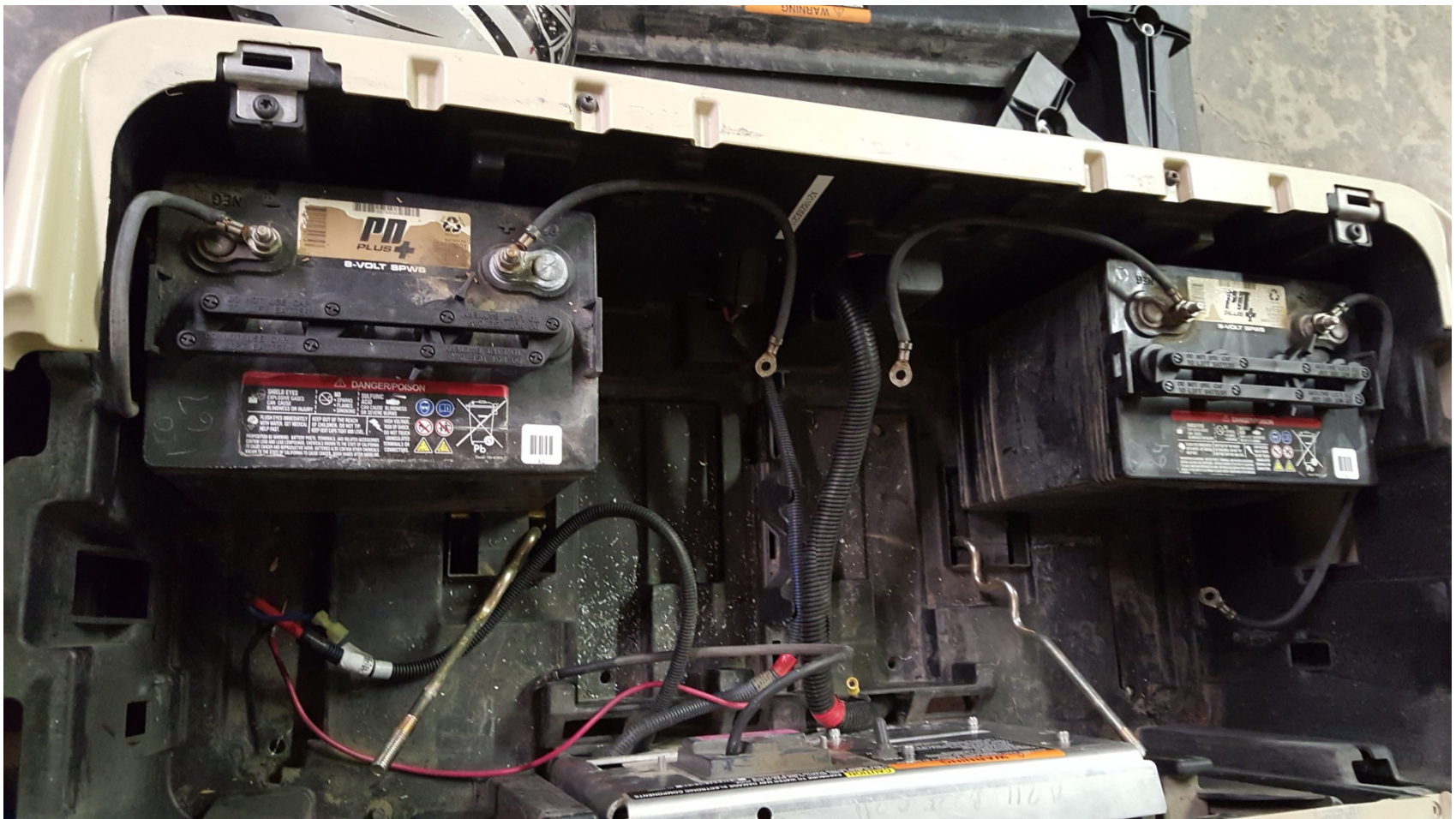
Step 1: Remove the plastic cover to access the motor and controller compartment.



Step 2: Remove the plastic cover that goes over the stock controller. Remove the wires that go to the motor. Also unplug the speed sensor.



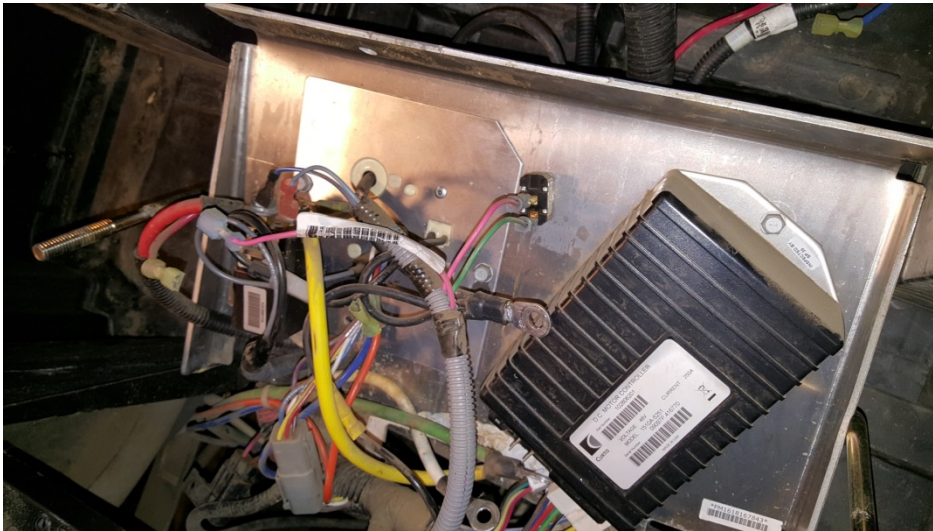
Step 3: Remove 4 batteries leaving the 2 shown in the picture.



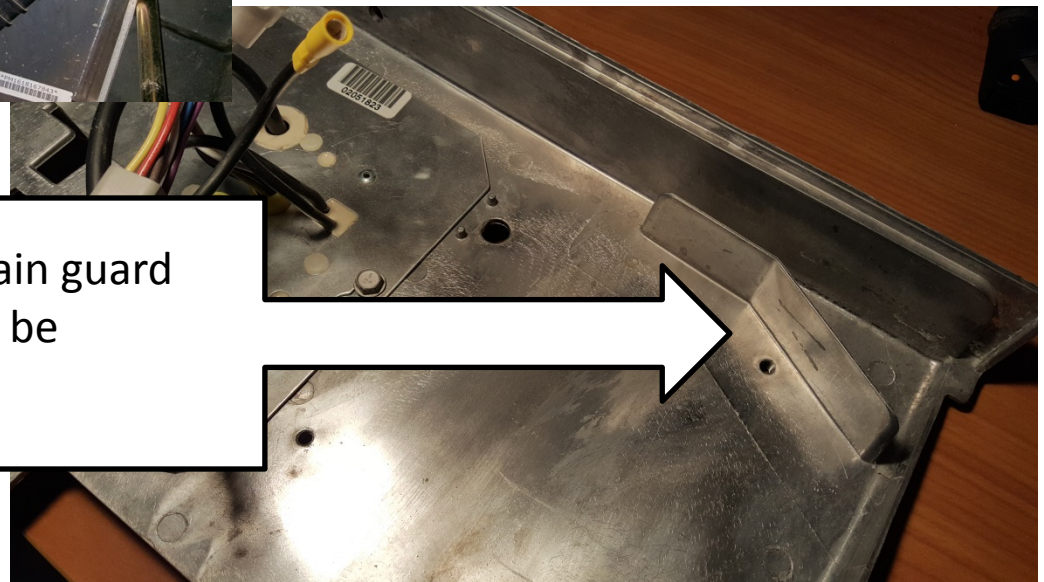
Step 4: Remove the star screw holding the mounting plate in place.



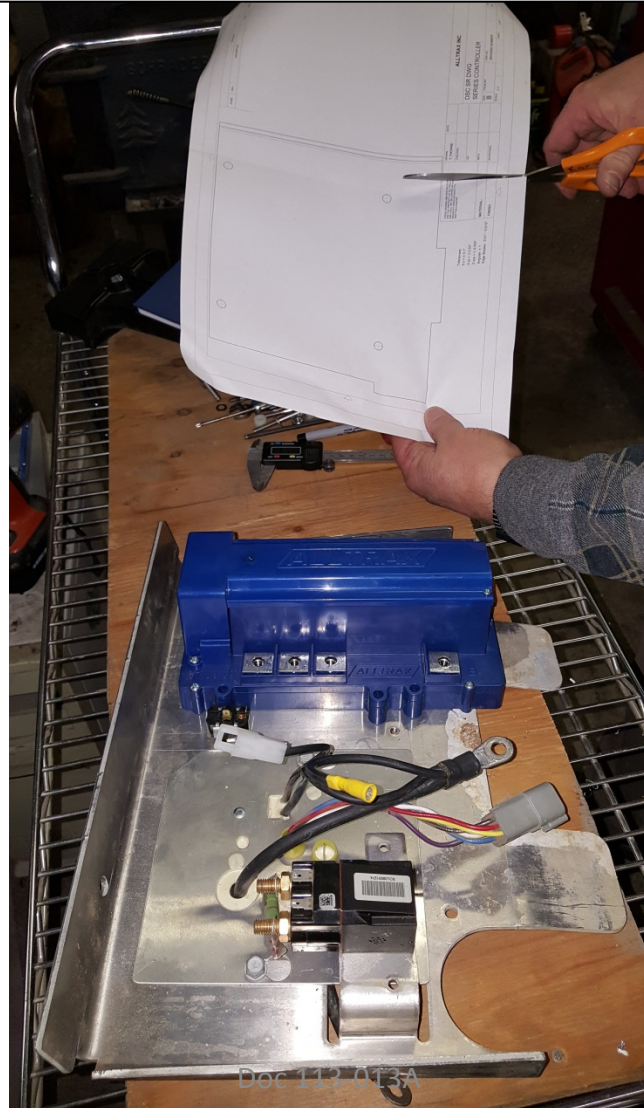
Step 5: Pull the mounting plate up and forward and remove all the cables from the controller, OBC and contactor and tow/run switch. Pull The mounting plate out of the cart.



later model carts have this rain guard on the plate that will have to be removed with a grinder.

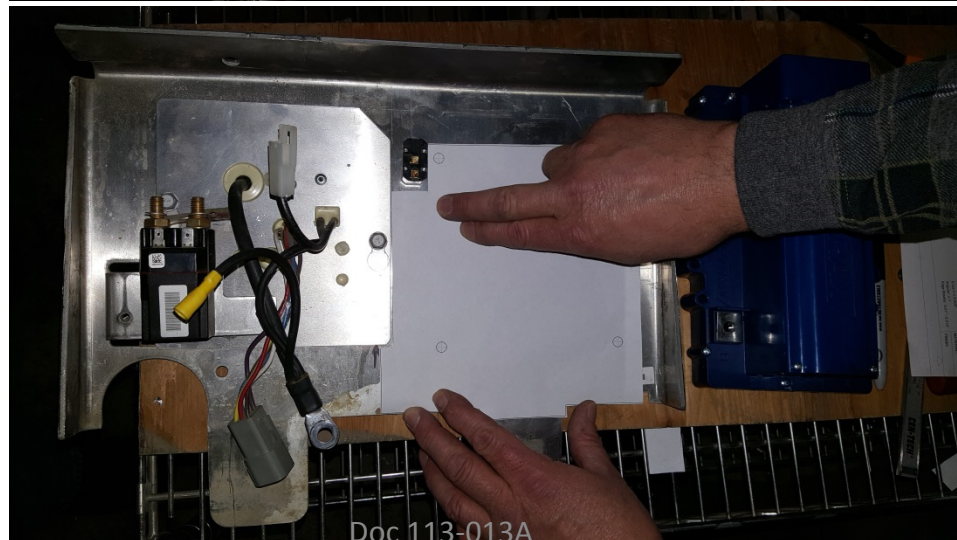
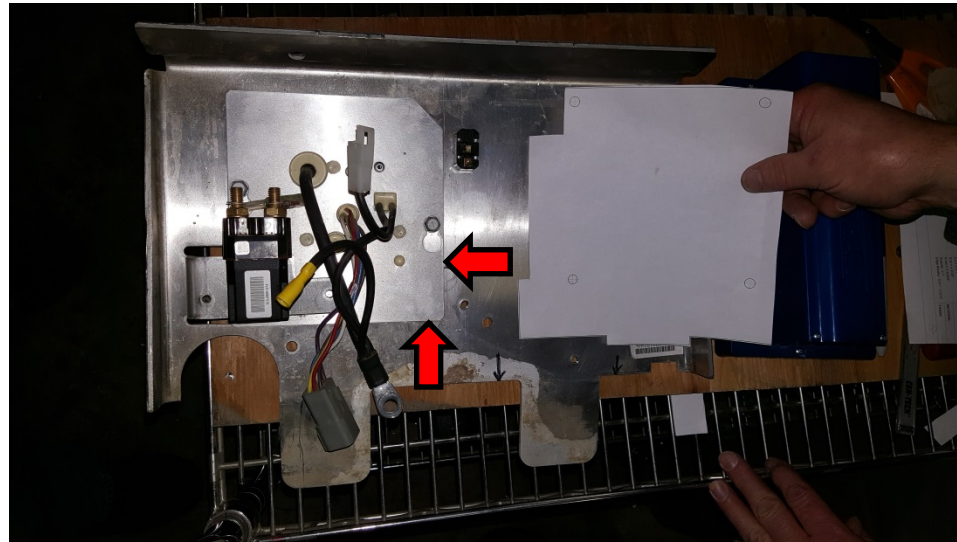


Step 6: Remove the stock controller from the mounting plate and cut out the template for the XCT controller.

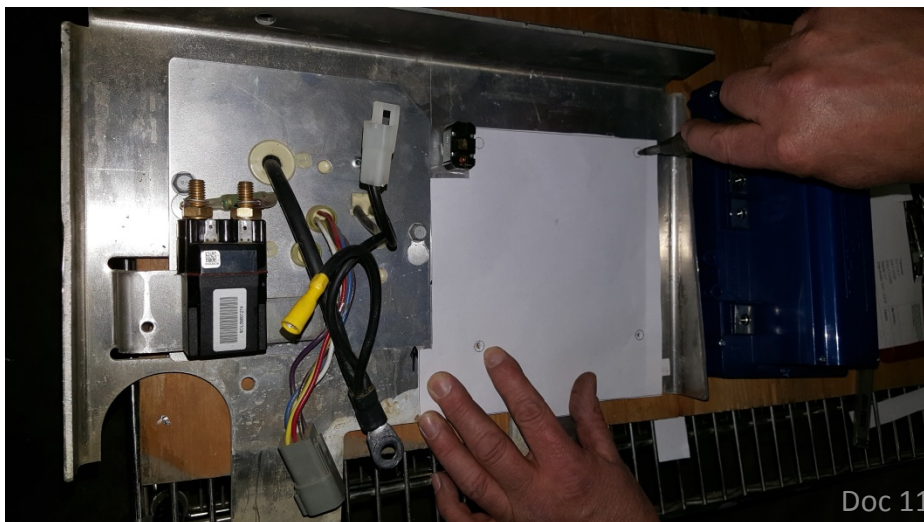
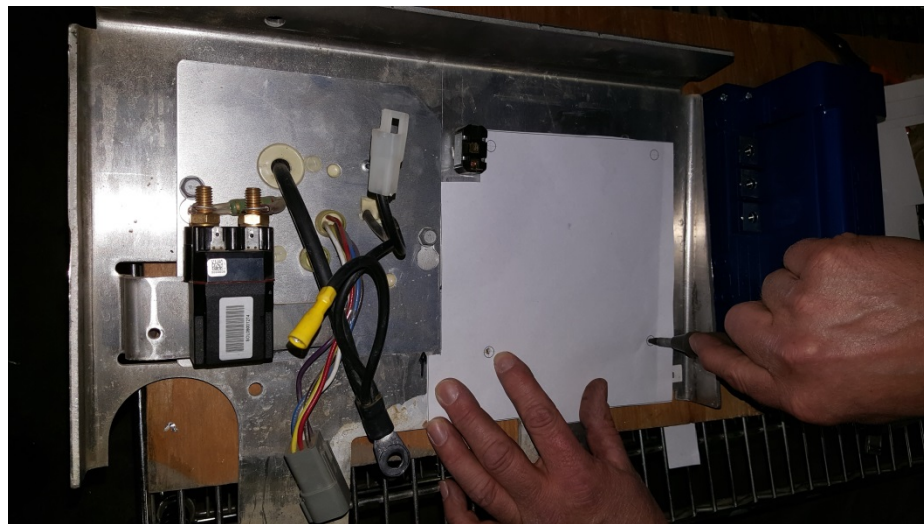
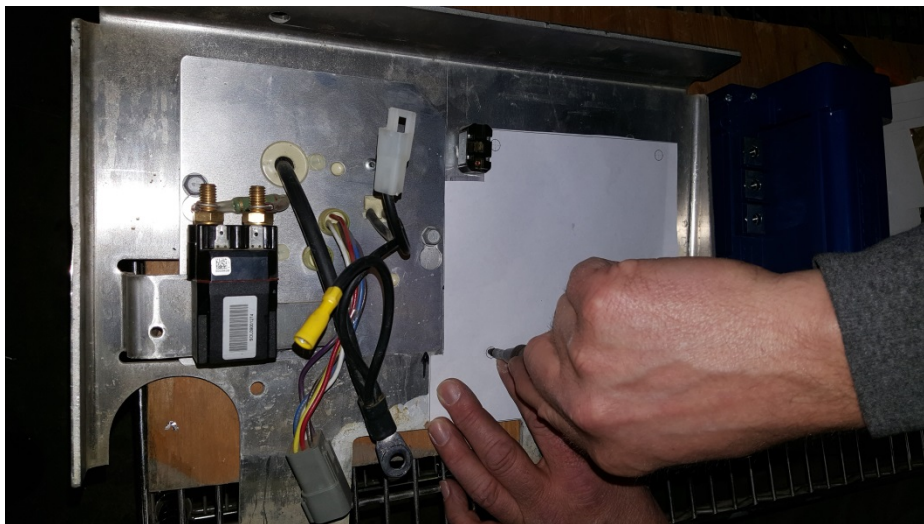




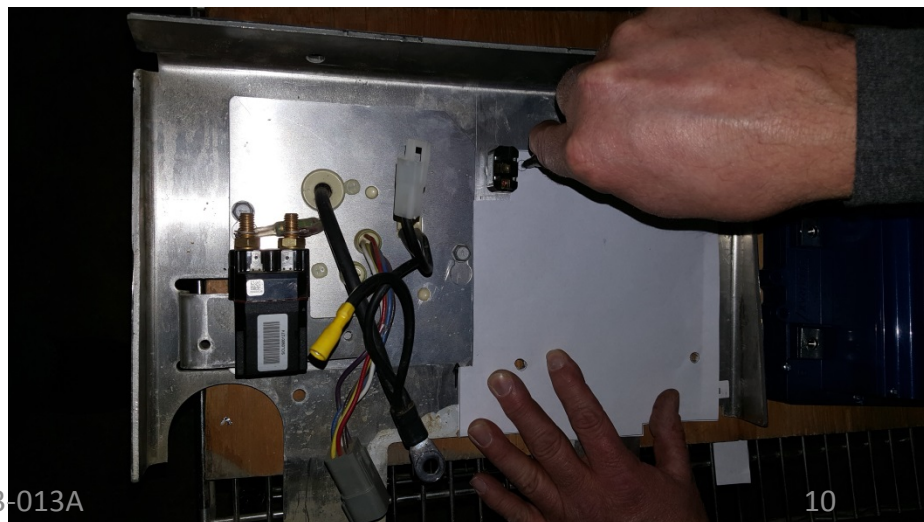
Step 7: Line up the template so that the left edge aligns with the edge of the OBC as shown in the picture.



Step 8: Use a punch tool to mark the 4 holes Through the template onto the adapter plate.



Doc 113-013A



10

## Step 9: Drill the marked holes



Doc 113-013A

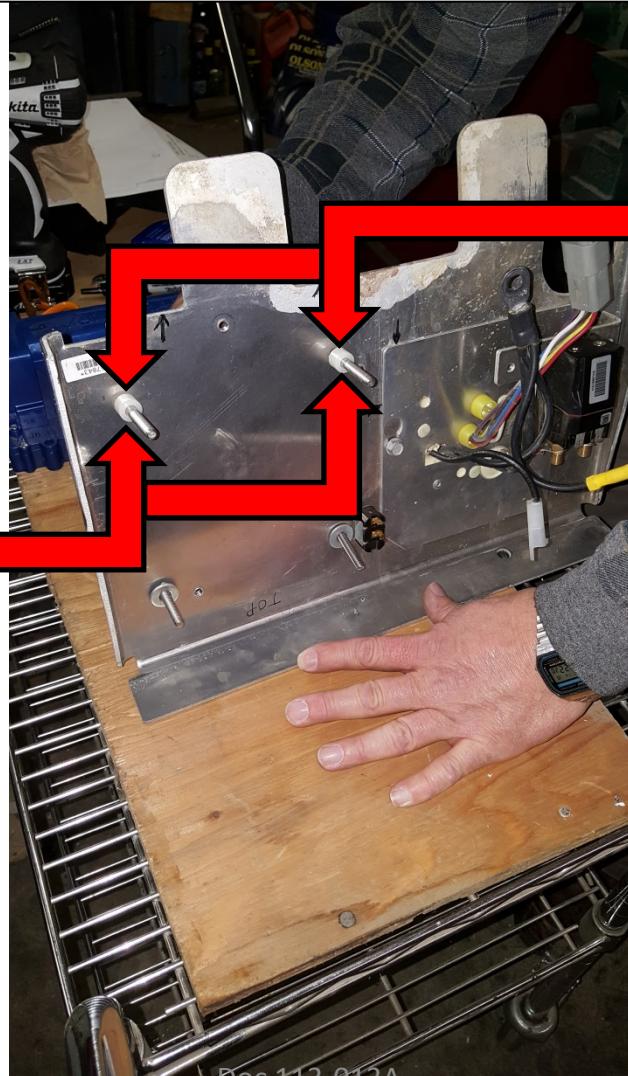
Step 11: Put the 2 flat washers onto the 2, ¼ x 20 x 2" bolts then push the bolts through the bottom 2 holes as shown. Then put the 2 Nylon Washer 375 on the bolts.



Flat Washer

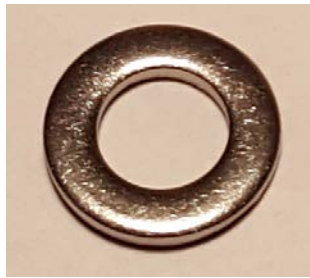


Bolt ¼ x 20 x 2"



Nylon Washer 375

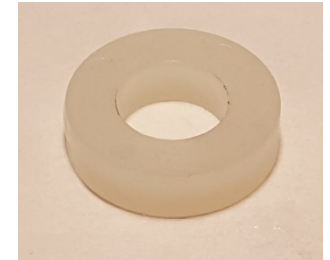
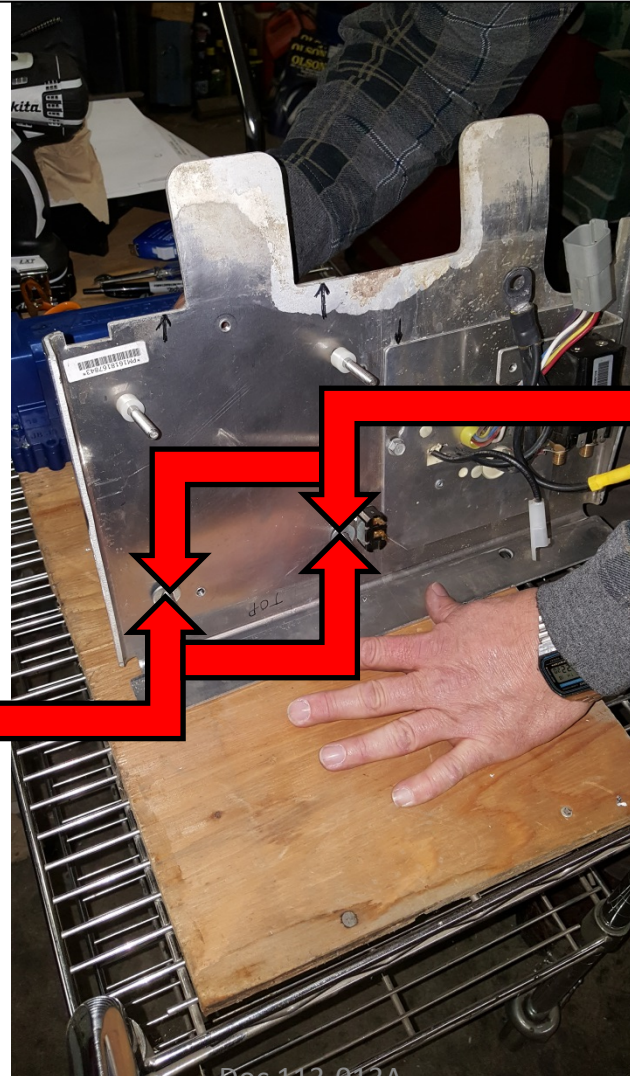
Step 12: Put 2 of the Flat washer's on the 2,  $\frac{1}{4}$  x 20 x 1.75" bolt's. Then push the bolts through the 2 top holes of the mounting plate as shown. Then put the 2 Nylon Washer 125 on the bolts.



Flat Washer

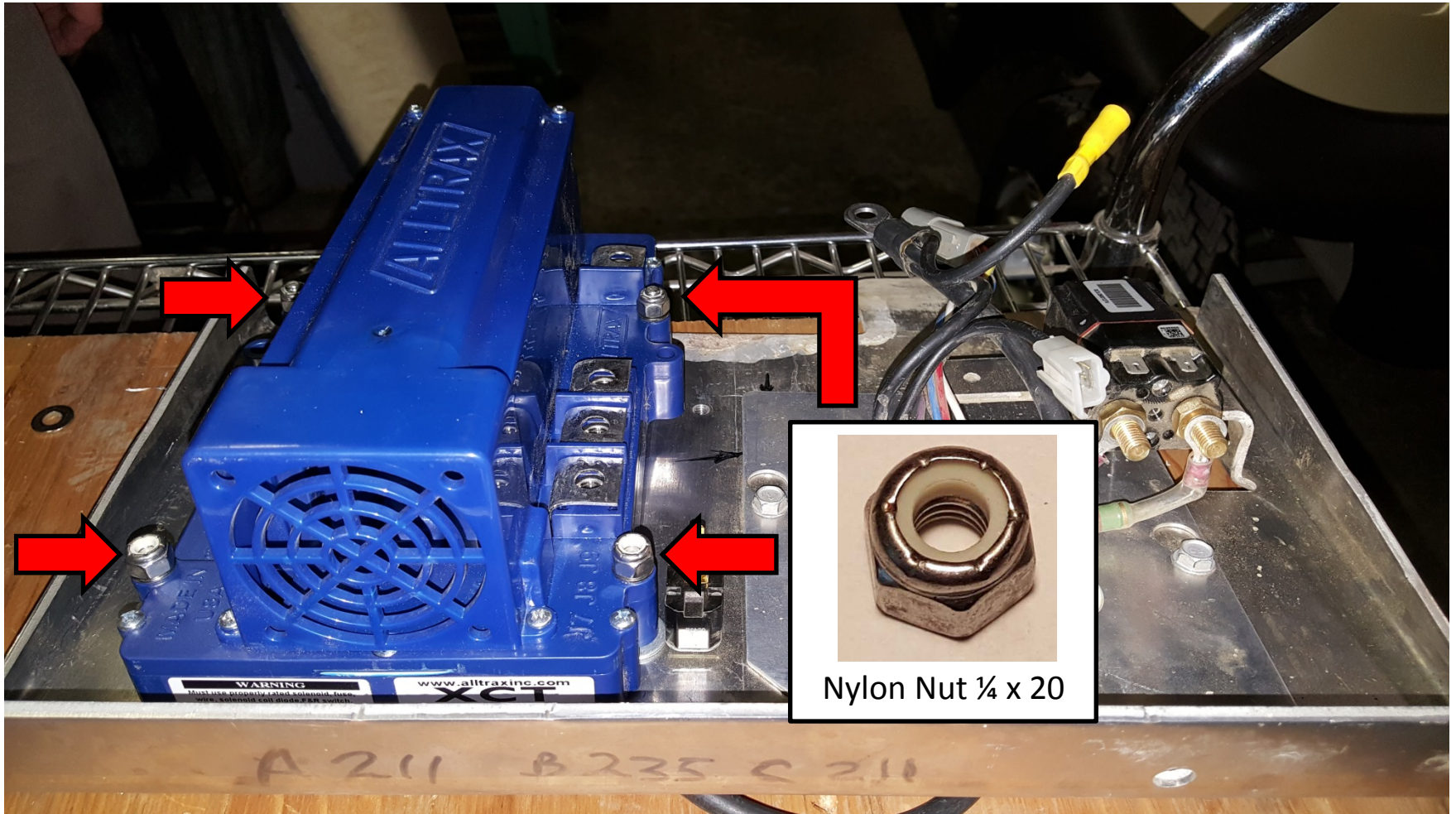


Bolt  $\frac{1}{4}$  x 20 x 1.75"

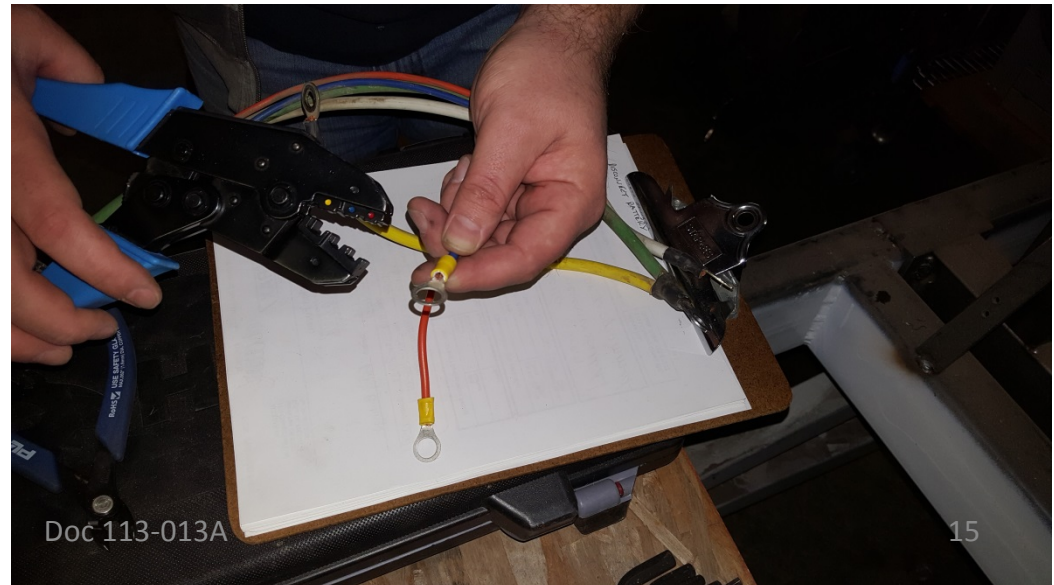
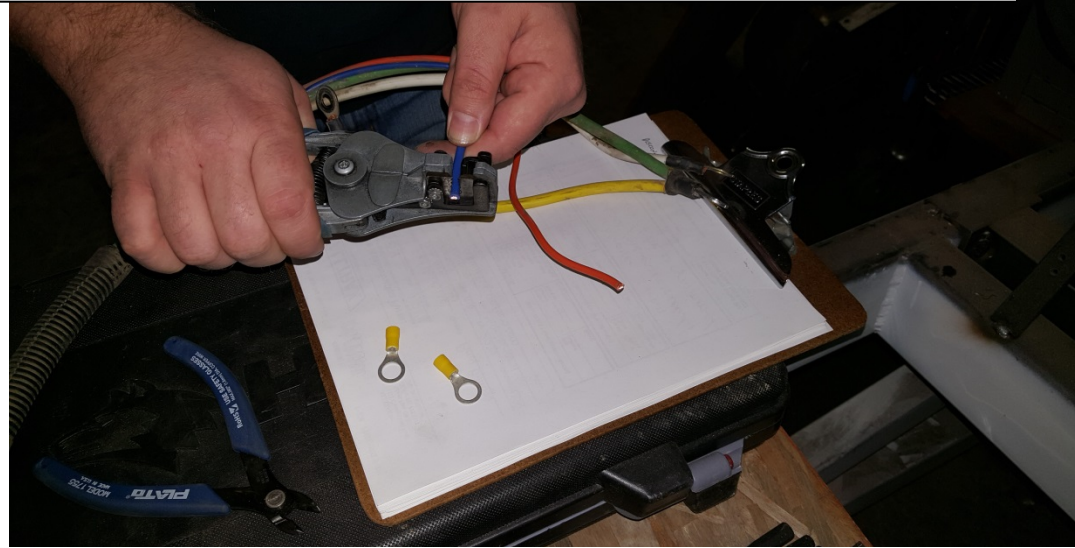
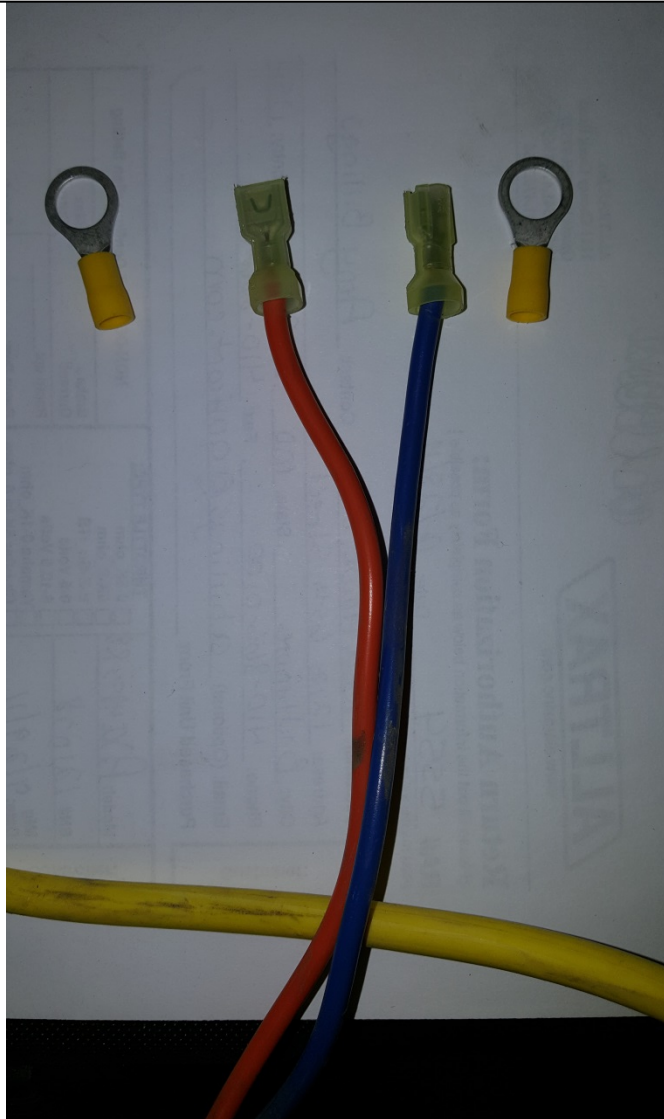


Nylon Washer 125

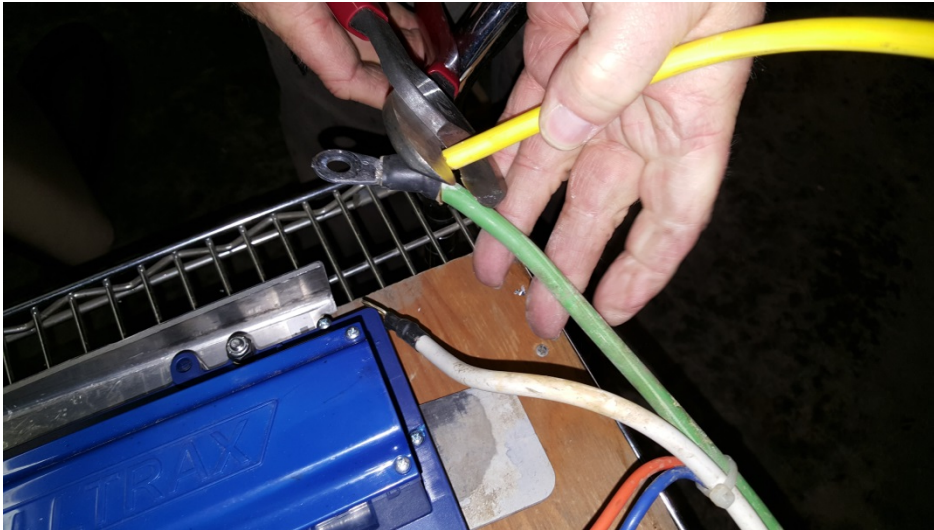
Step 13: Put the controller over the bolts and put the 4 nuts on the 4 bolts and tighten them up.



Step 14: Attach the supplied ring terminals to the blue and orange wires that went to the motor's F1 and F2 terminals.



Step 15: Cut the yellow wire attached to the green motor wire and tape off.

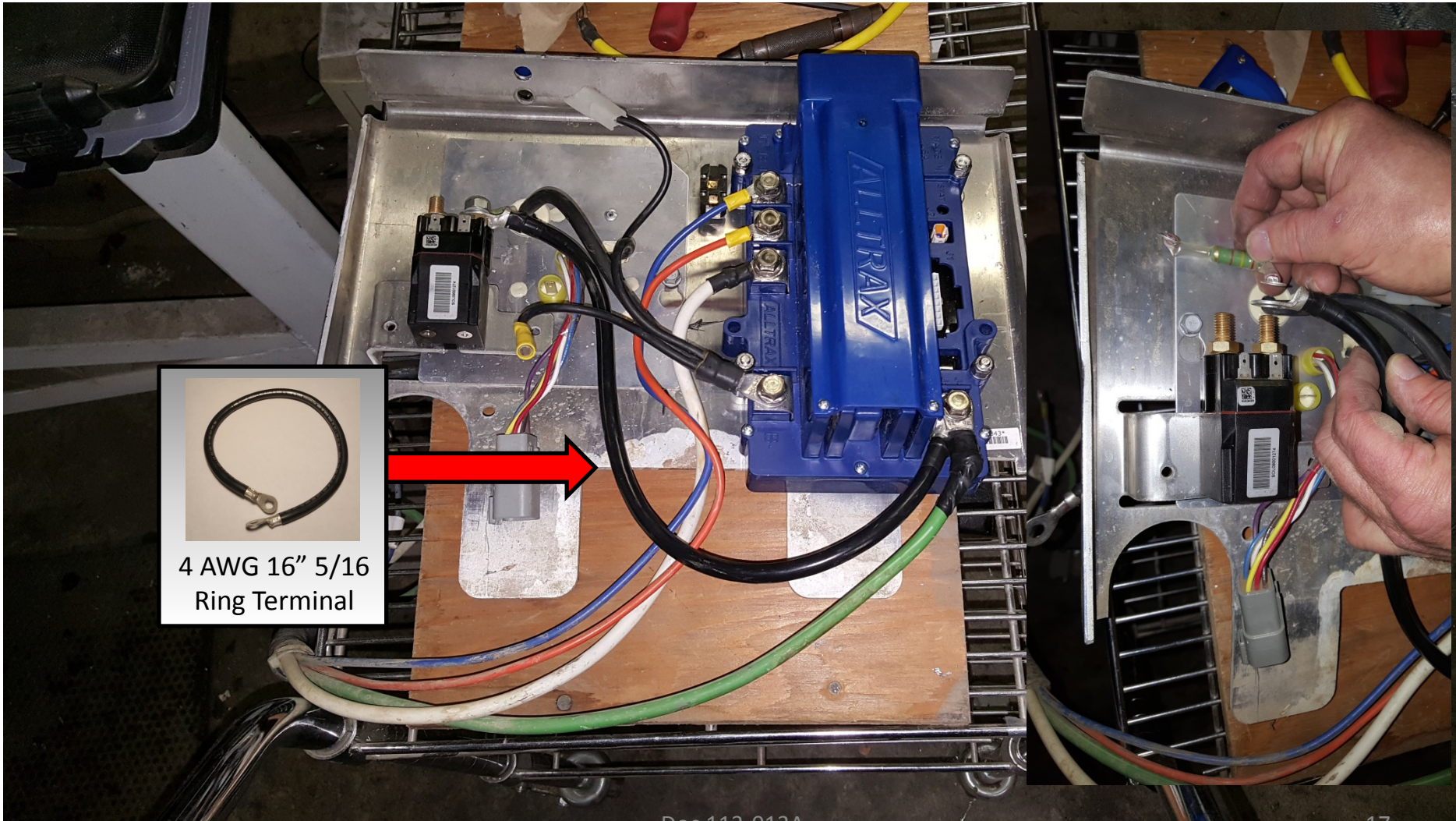


**Warning!**  
If using a 500 amp model controller you must upgrade the stock high current cables to 2 gauge throughout the cart. With the exception of the F1 and F2 wire's.

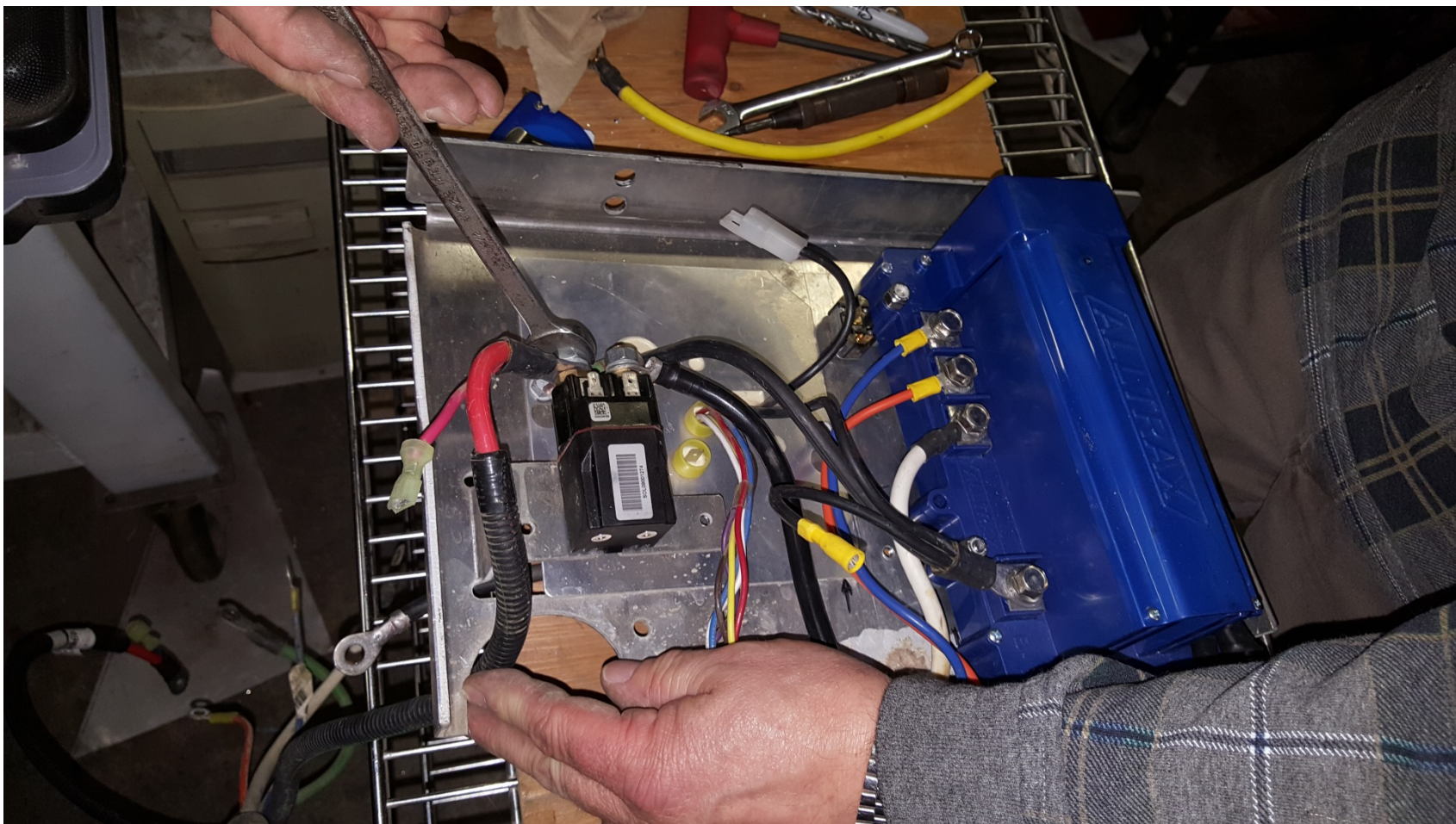




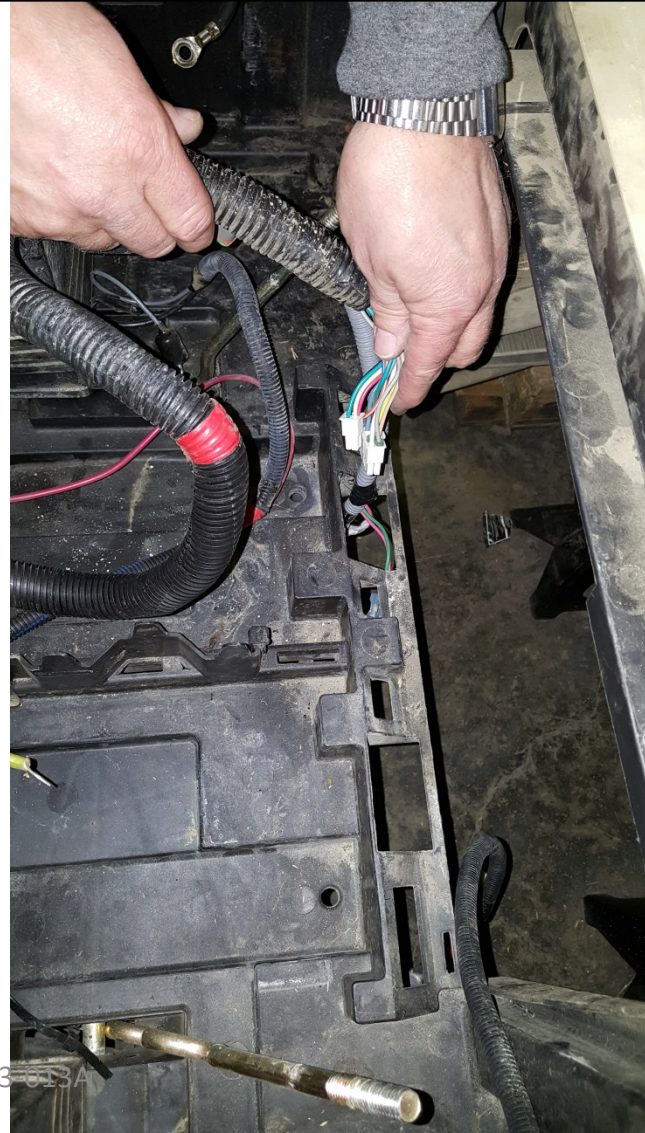
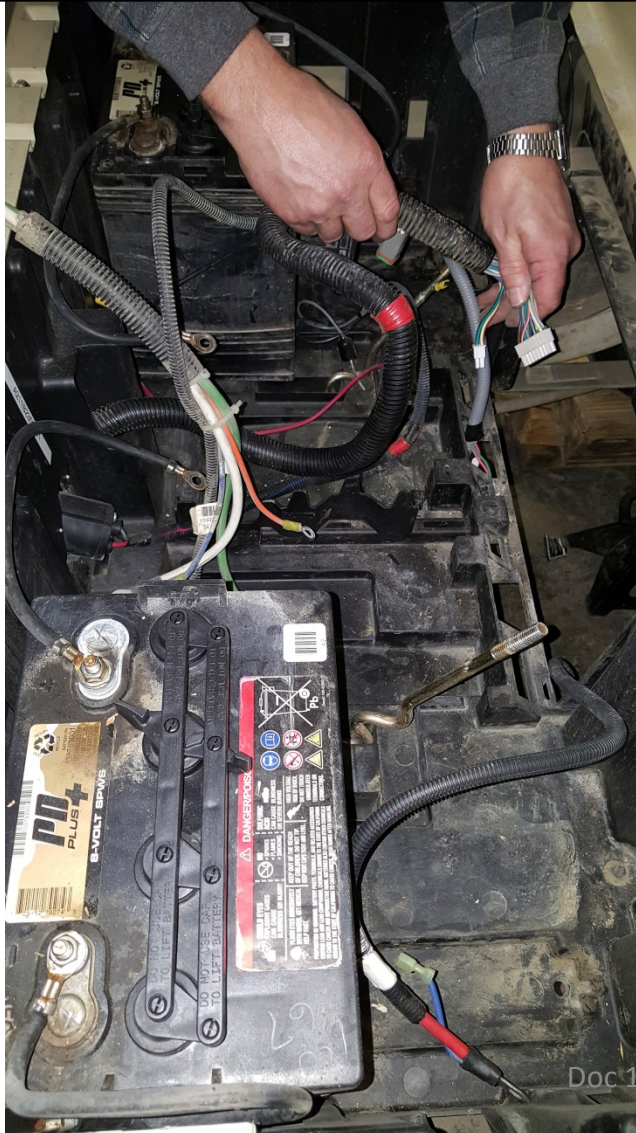
Step 16: Take the end of the green wire from the motor and the supplied 4 gauge wire and attach them to the B+ terminal of the controller. Attach the other end of the supplied 4 gauge wire to the solenoid as shown. Attach the Blue wire to J7 of the controller. Attach the orange wire to J8. Attach the white wire to J9.



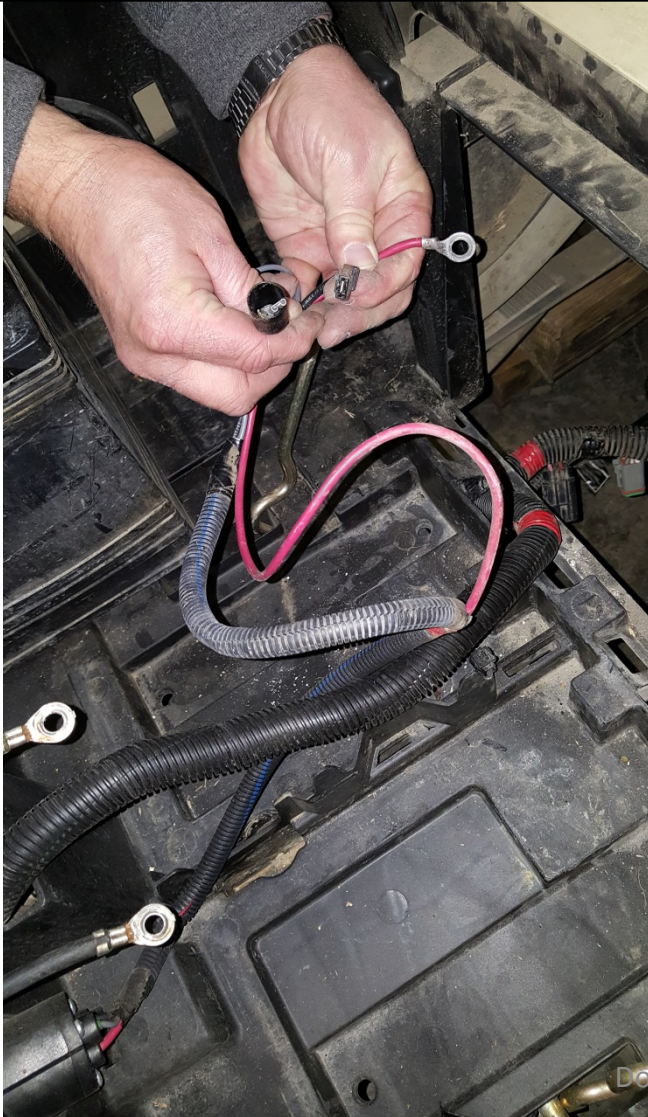
Step 17: Attach the Positive battery wire to the contactor and route through adapter plate as shown.



Step 18: Route the wire harness containing the 16 pin connector, 4 pin connector and OBC connector through the hole in the plastic battery tray as shown.



Step 19: Route the wire harness that contains the OBC, Tow/Run and charge port wire across the battery tray as shown.



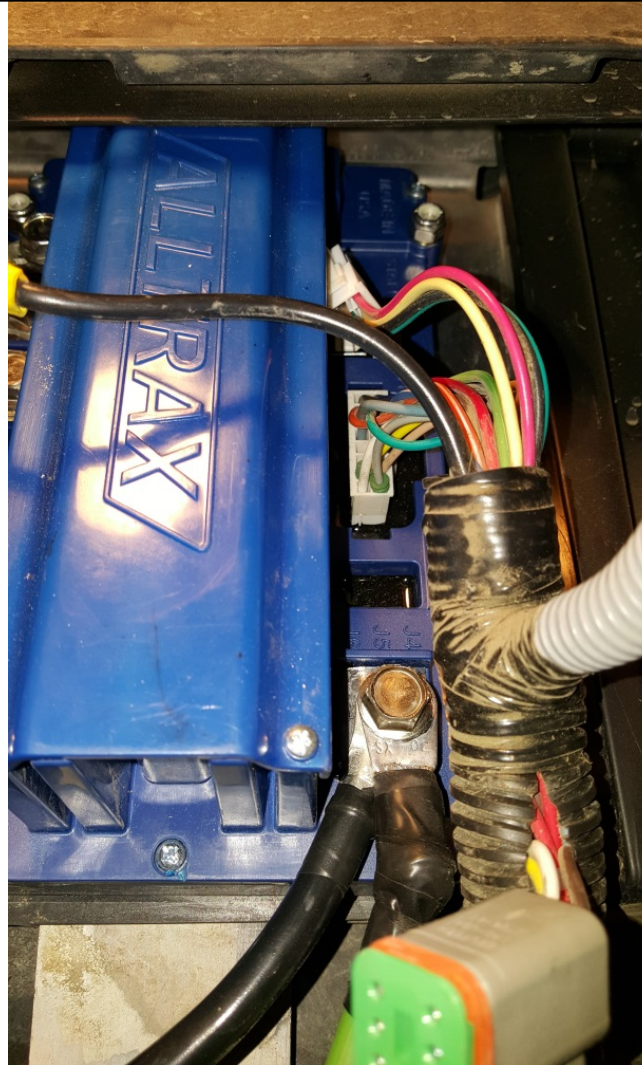
Step 20: Slide the adapter plate back into its original position. The bottom lip of the plastic battery tray will fit between the controller and adapter plate as shown.



Step 21: Mark and drill a hole as shown for the star screw to allow clearance for the plastic cover to go back over the controller.



Step 22: Connect the 16 pin wire harness to the controller. The 4 pin plug is for the stock controller only.



Step 23: Reconnect the OBC wire's, solenoid wire's and tow/run switch wire's.



Blue/White and blue wire to contactor coil terminals.

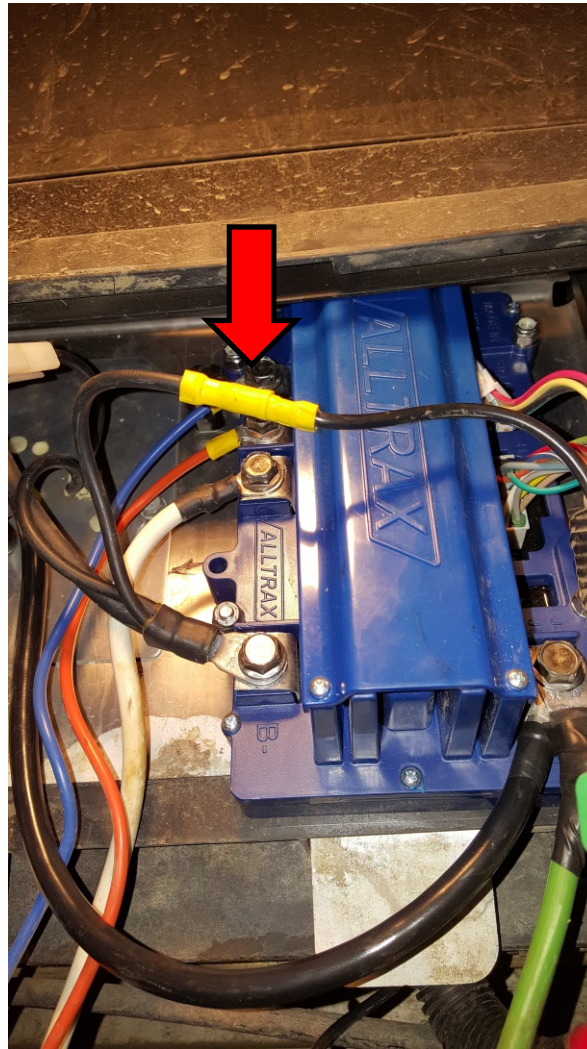
Red and Green wires to tow/run switch

Contactor wire to harness

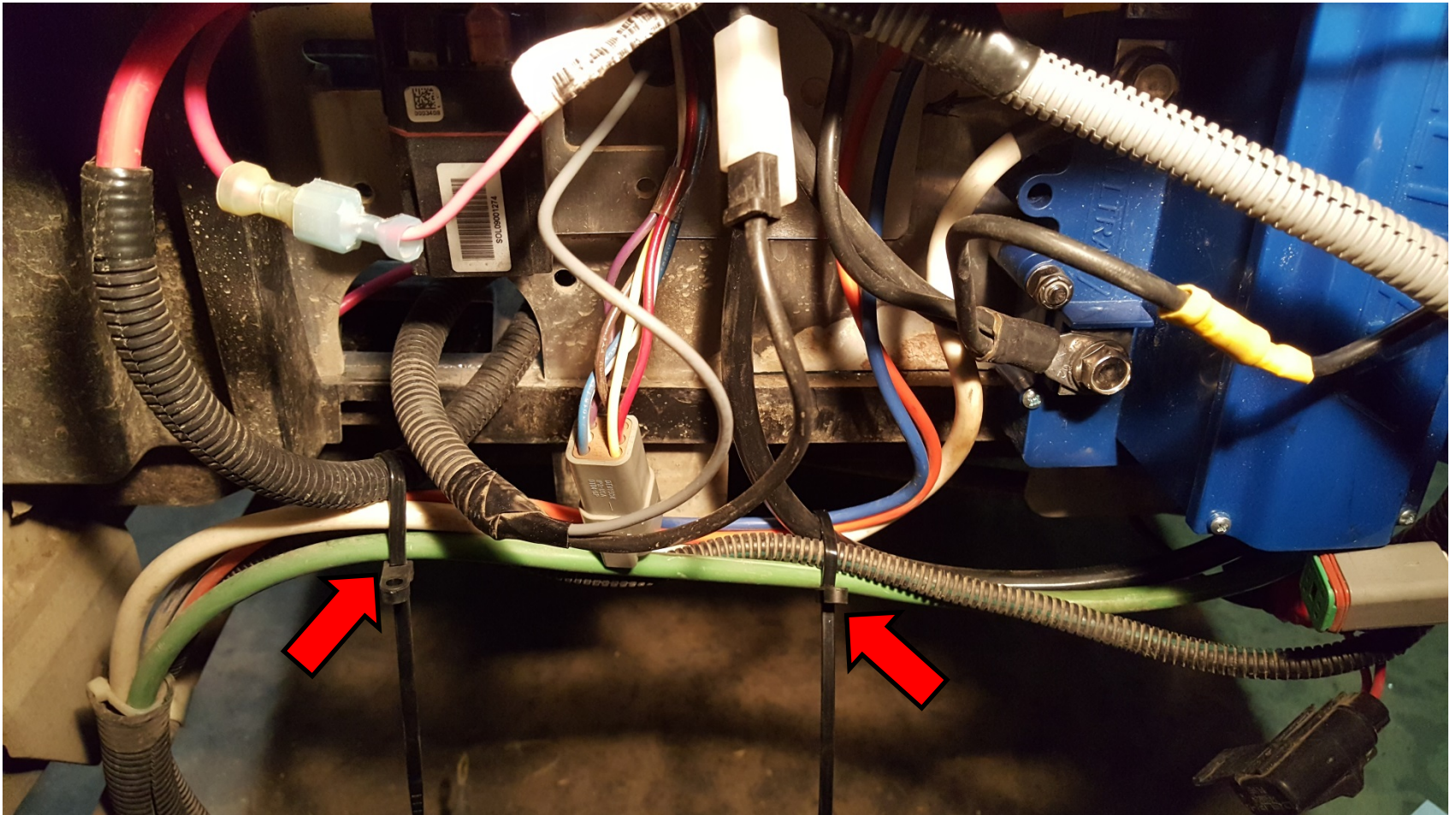




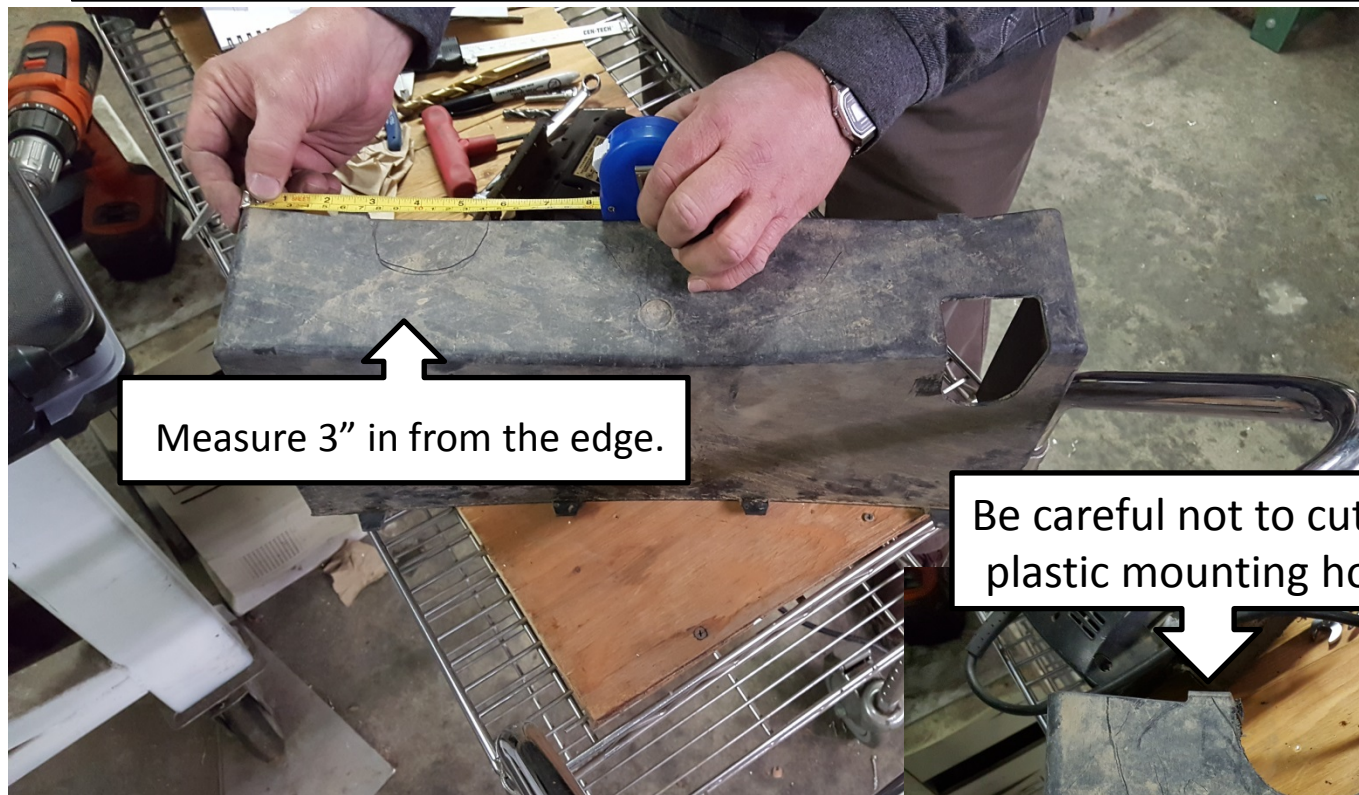
Step 24: Reconnect the black wire from the harness to the black B- wire as shown.



Step 25: Zip tie the motor and speed sensor wires as shown.



Step 26: The plastic cover must be notched as show in order for the wires to pass through it.



Measure 3" in from the edge.

Be careful not to cut the plastic mounting hook.



Step 27: Attach the OBC Jumper and put the plastic cover back on. The OBC jumper is not included in kits for later model carts with no on board computer.

